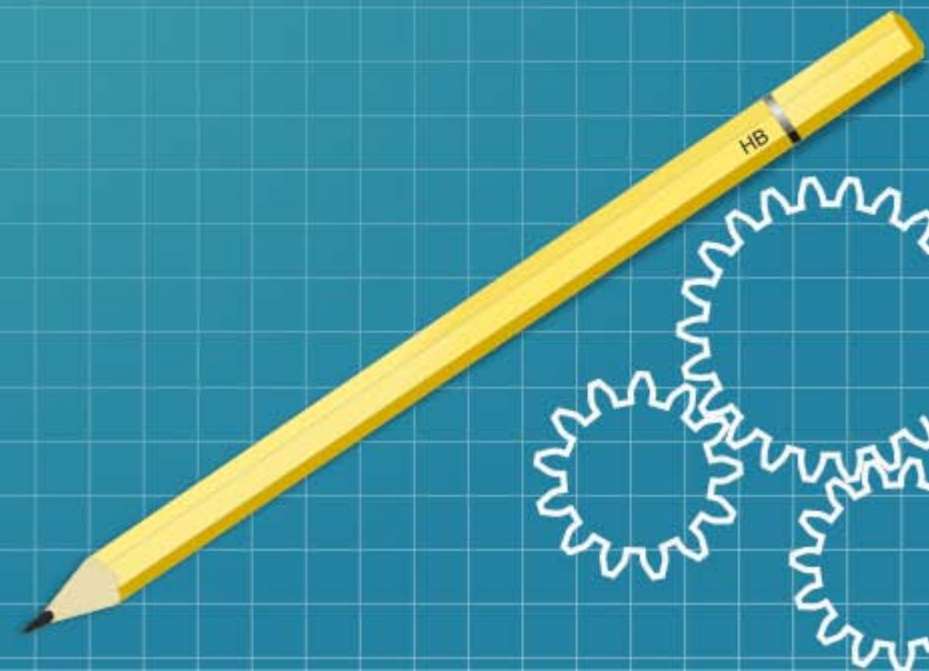
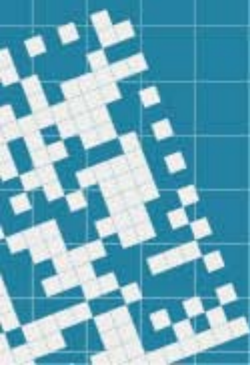


Połączyć widzialne z niewidzialnym

CAMK, 2019-09-21

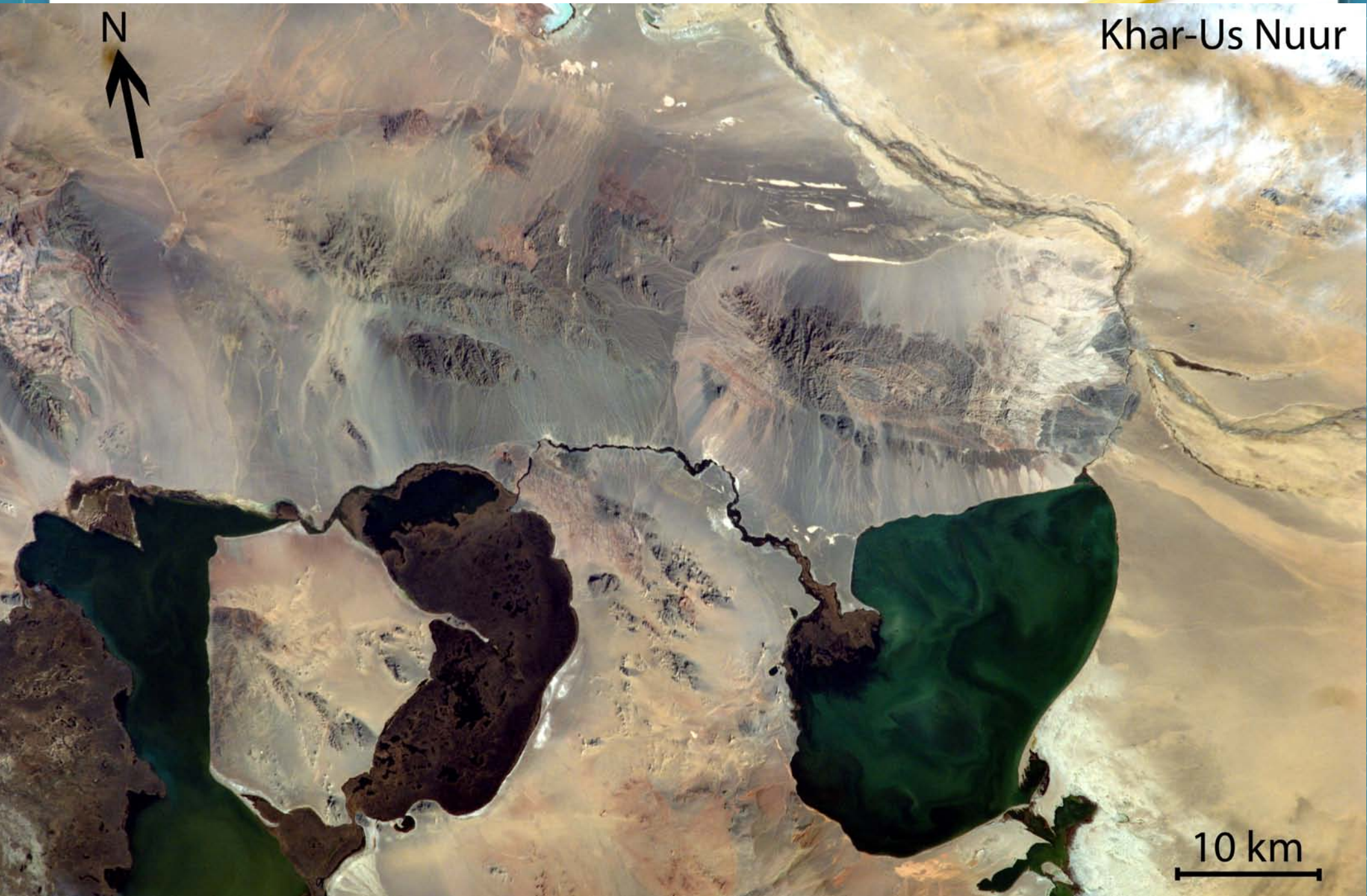


Projekt EarthKAM

Obrazy w barwach naturalnych,
aparatur Nikon D2X Digital SLR
rozmiar klatki 4312 x 2868,
rozmiar zdjęcia 12.4 Mpx



Analiza podstawowa



Khar-Us Nuur

10 km





Jeziro Koyashkoye na Krymie

https://img.huffingtonpost.com/asset/5b9ed9f2240000310095a2c4.jpeg?ops=scalefit_960_noupscale



Potrzebne są dodatkowe informacje

The screenshot displays the EO Browser interface. The top navigation bar includes a back arrow, the EO Browser logo, a power icon, and a search bar with the text "Go to Place". Below the navigation bar, there are tabs for "Search", "Results", "Visualization", and "Pins". The left sidebar contains a "Data sources" section with a list of satellite sensors: Sentinel-1, Sentinel-2 (checked), L1C (checked), L2A, Sentinel-3, Sentinel-5P, Landsat, Envisat Meris, MODIS, Proba-V, and GIBS. A "Max. cloud coverage" slider is set to 49%. Below this is a "Time range" section with date pickers for "2019-08-18" and "2019-09-18". At the bottom of the sidebar, there is a "Theme" section with a gear icon and a footer that reads "Powered by Sinergise with contributions from the European Space Agency v2.19.12". The main map area shows a satellite view of Poland and surrounding regions, with labels for cities like Warsaw, Krakow, Lodz, and Brest. The map includes a search bar, a layer control icon, an information icon, and a vertical toolbar with various map controls. A scale bar at the bottom right indicates "100 km" and shows coordinates "Lat: 47.56, Lng: 27.30".

EO Browser

Hello, Grzegorz Sek

Search Results Visualization Pins

Data sources:

- Sentinel-1
- Sentinel-2
 - L1C
 - L2A
- Sentinel-3
- Sentinel-5P
- Landsat
- Envisat Meris
- MODIS
- Proba-V
- GIBS

Max. cloud coverage: 49 %

Time range: 2019-08-18 - 2019-09-18

Theme: [gear icon]

Powered by Sinergise with contributions from the European Space Agency v2.19.12

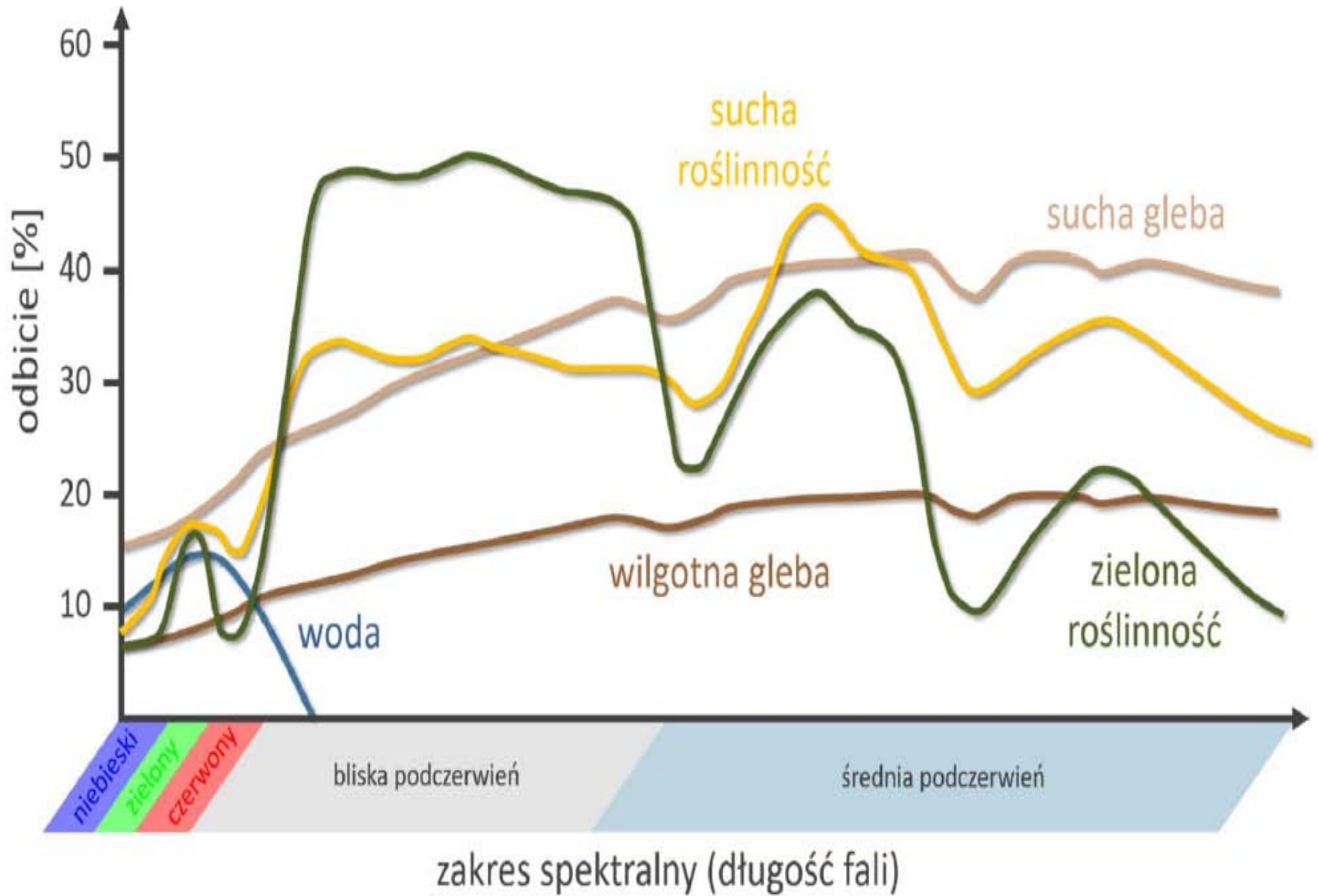
Go to Place

Poland, Warsaw, Krakow, Lodz, Brest, Prague, CZECHIA, SLOVAKIA, VIENNA, Bratislava, Munich

Lat: 47.56, Lng: 27.30

100 km

About EO Browser Contact us Get data



zakres spektralny (długość fali)

NDSI – wskaźnik utworzony z kombinacji pasm
530 – 610 nm (barwa zielona) oraz
1,55 – 1,75 mikrometra (bliska podczerwień)

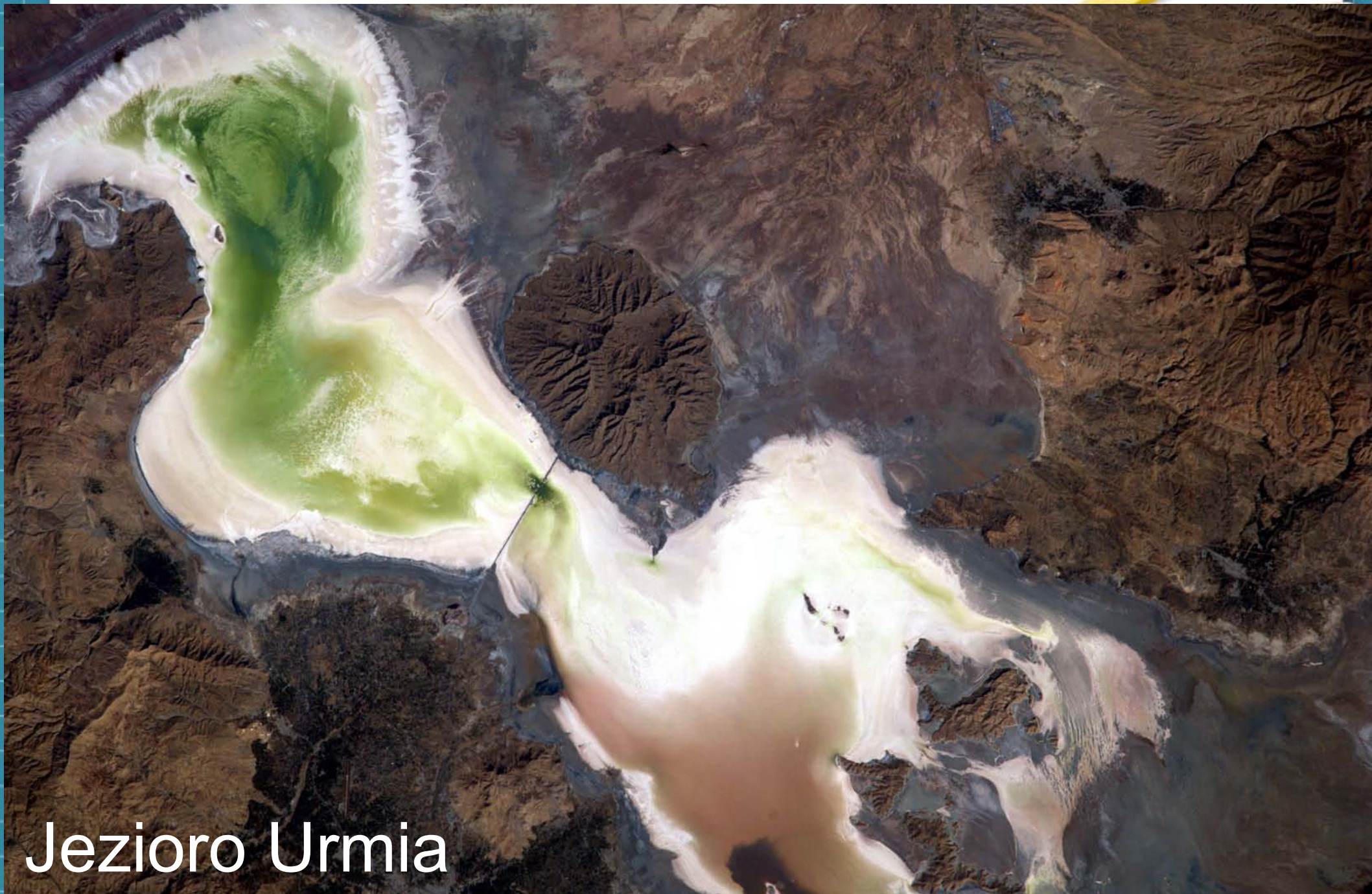


<https://eol.jsc.nasa.gov/>



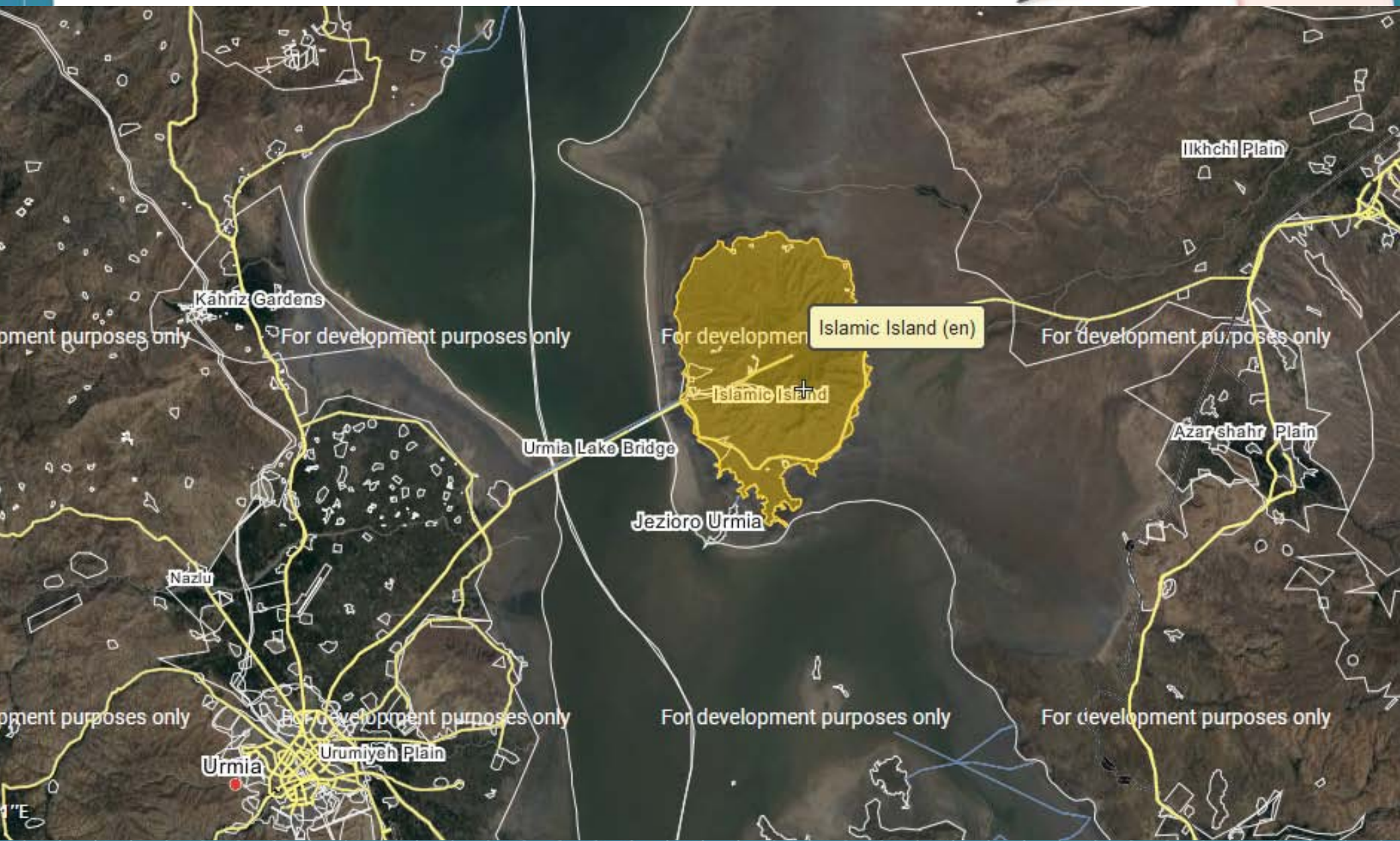
2007

Wyspa? Jaka wyspa

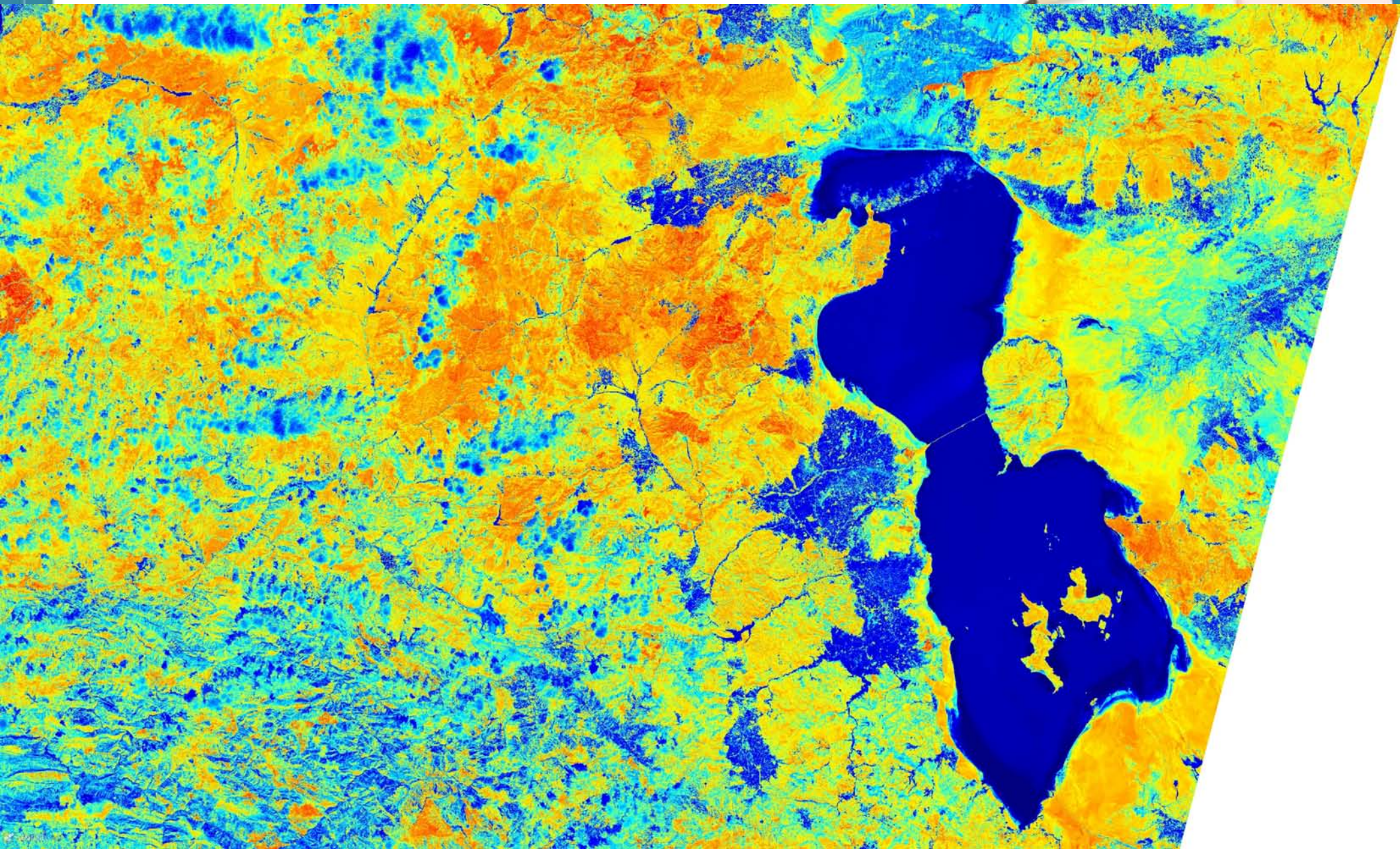


Jeziro Urmia

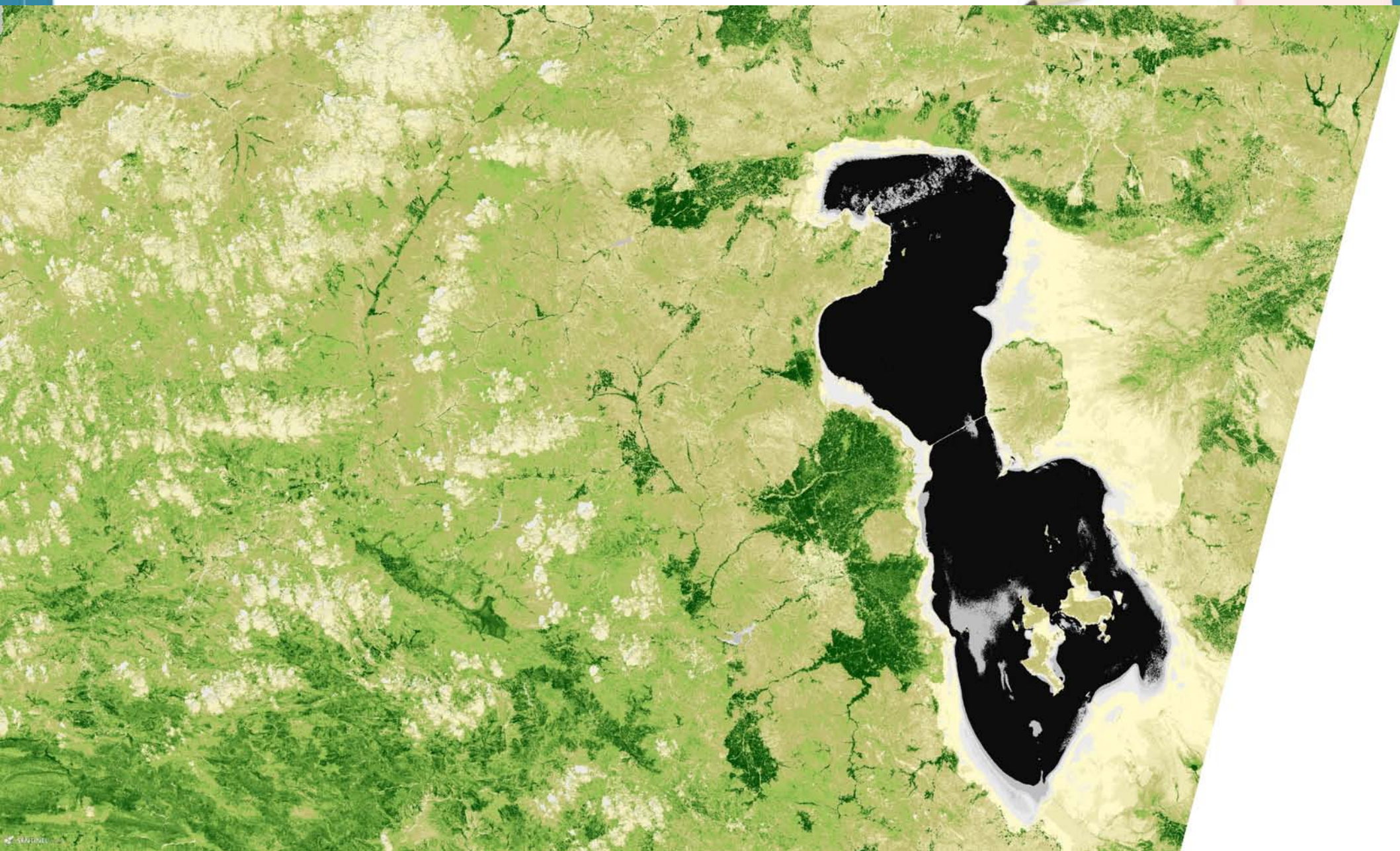
<http://wikimapia.org>



Wskaźnik wilgotności NDMI



Wskaźnik wegetacji roślinnej NDVI

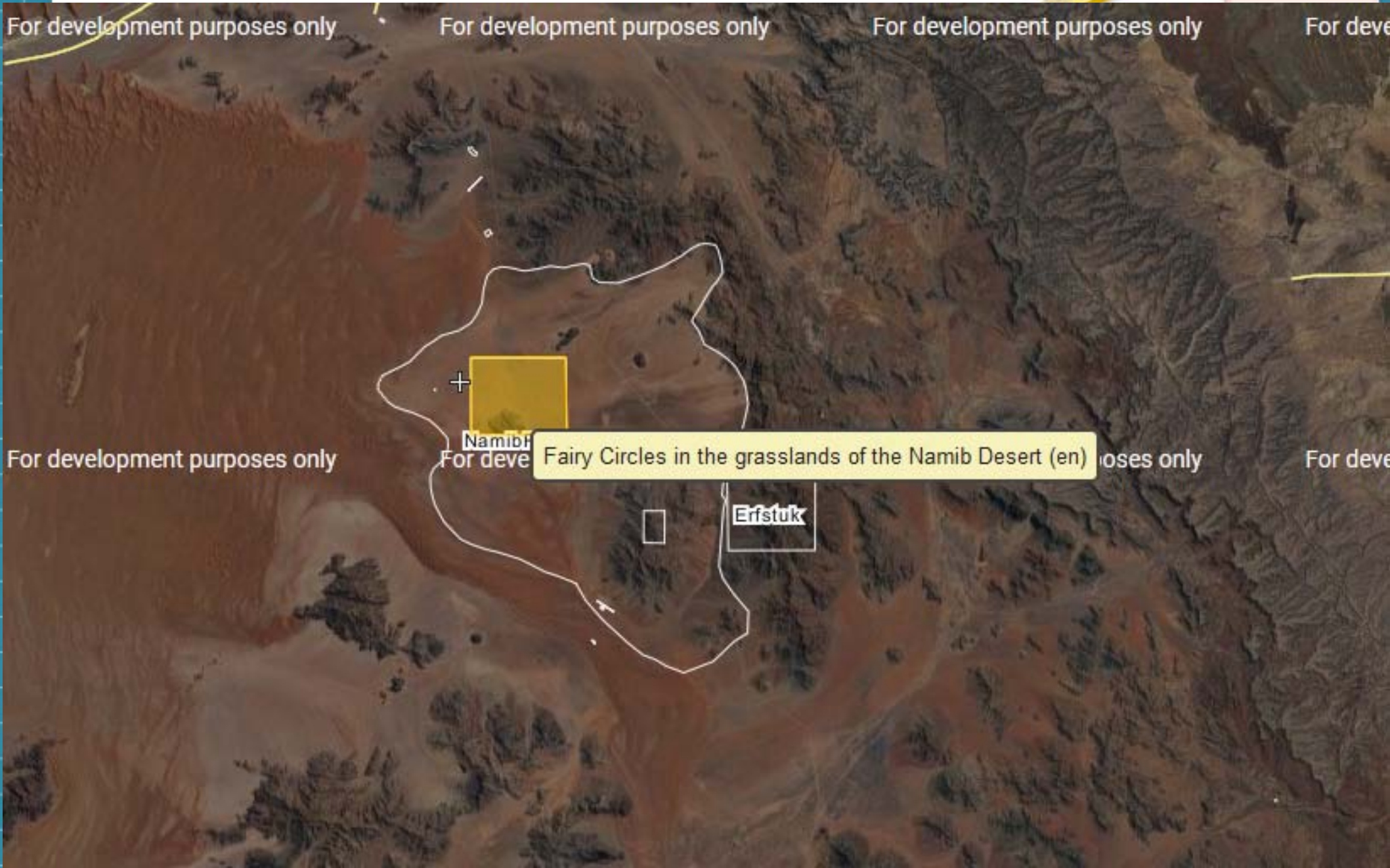


Matka wszystkich pustyń - Namib

Zbudowały ją: rzeka Oranje wypływająca z Gór Smoczych oraz zimny Prąd Benguelski wspomagany wiatrem



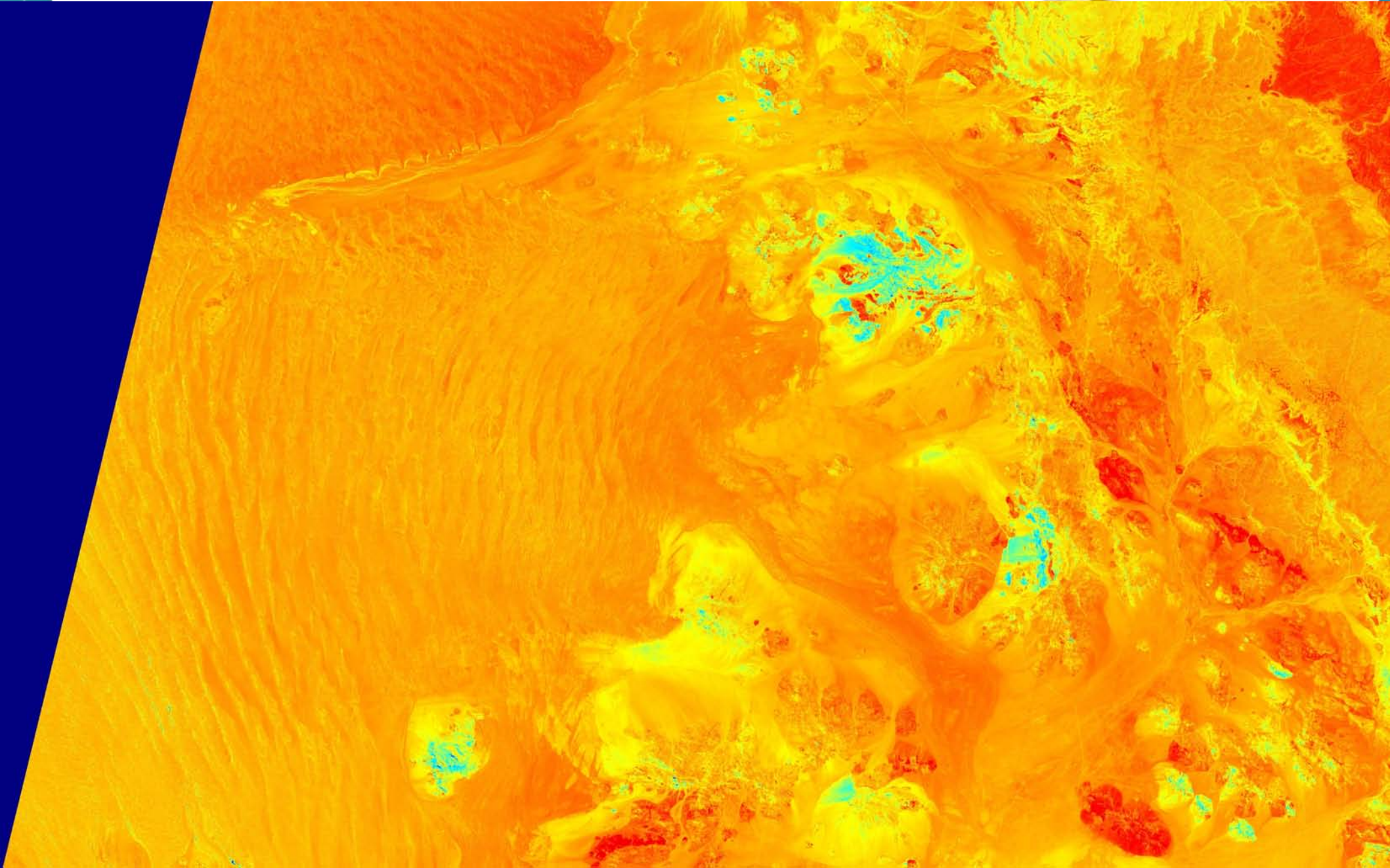
Czarcie koła z trawy



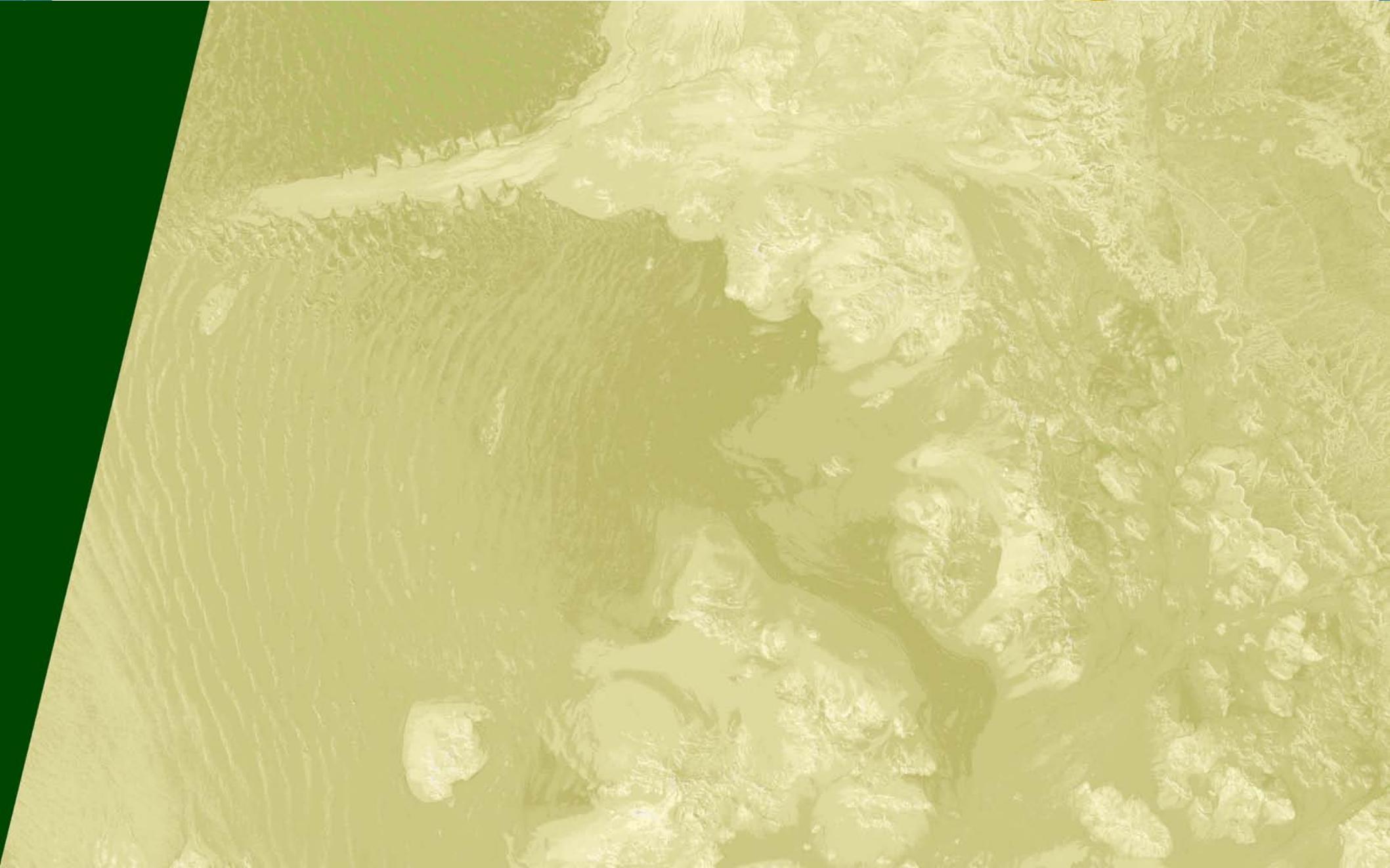
No to szukamy śladów życia na pustyni



Nie ma śladu wilgoci



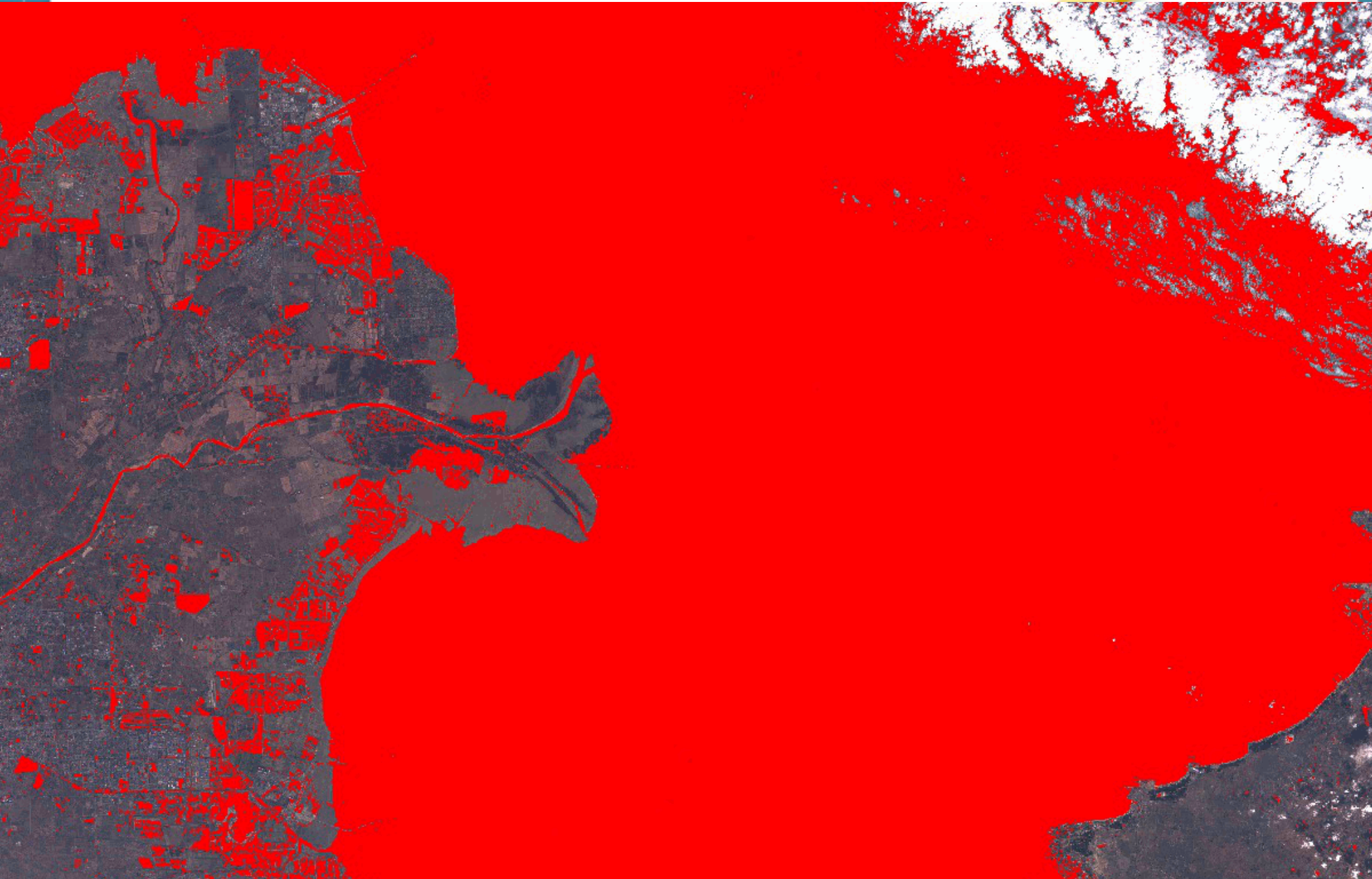
Termity piaskowe?



Rzeka buduje zamki z piasku



W ciągu 5 lat przybyło lądu



Sally Ride EarthKAM & Space Camp

<https://www.earthkam.org/>

EO Browser

<https://apps.sentinel-hub.com/eo-browser/>

EUROPEAN SPACE IMAGING

<https://www.euspaceimaging.com/>

GATEWAY TO ASTRONAUT PHOTOGRAPHY
OF THE EARTH

<https://eol.jsc.nasa.gov/>

NASA earth observatory

<https://earthobservatory.nasa.gov/>





Grzegorz Sęk, Młodzieżowe Obserwatorium Astronomiczne
im. Kazimierza Kordylewskiego w Niepołomicach

